

# FCCLA Webquest

FCCLA is here to help members, like yourself, travel beyond their limits. Joining FCCLA will broaden your creative thinking, allow you to experience leadership, build life skills, and create new friendships.

# 1. What does FCCLA stand for?

- Family, Career and Community Leaders of America



## 2. What is the name of the National Outreach Programs?

- Share our strength – No Kid Hungry
  - More than 16 million kids in America struggle with hunger. So Share Our Strength created the No Kid Hungry campaign to **end childhood hunger in America**. Through No Kid Hungry, kids are getting access to the food they need to live, learn & play.

You can help! Visit [www.NoKidHungry2.org/fccla](http://www.NoKidHungry2.org/fccla) to learn more about childhood hunger. Pick a fundraising activity & have fun with it. Send Share Our Strength the funds you raise & your chapter can earn some great incentives.

Together we can end childhood hunger!



### 3. How many National Executive Council Members (National Officers) are there?

- There are 10 National officers

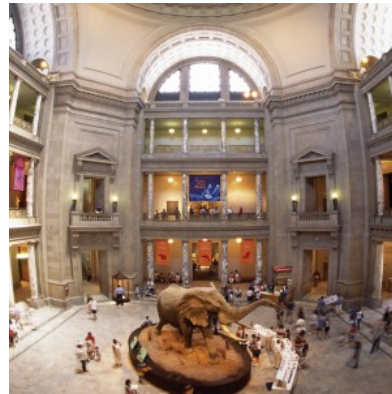


# 4. Where is the next National Leadership Conference? Share four highlights about the city?

- Washington DC. July 5-9, 2015



Historic National Buildings



Visit the Smithsonian or the National Zoo.



World War II Memorial



## 5. List the two goals of the Families First Program?

- Families First is a National peer education program. Its goals are to:
  - (1) help youth become strong family members & leaders for today & tomorrow.
  - (2) strengthen the family as the basic unit of society.



## 6. What does FACTS stand for?

- Families Acting for Community Traffic Safety (FACTS)
  - **FACTS** is a National peer education program where students strive to save lives educating adults & youth about traffic safety.
    - **Think SMART** — Keep youth from driving when under the influence of alcohol & drugs.
    - **Buckle UP** — Promote safe use of seat belts, child safety seats, booster seats & air bags.
    - **Arrive Alive** — Educate safe driving habits & not texting while driving.
    - **Speak Up** — Empower teens to speak up for their own safety.
    - **Bridge the Gap** — Encourage conversation & training for parents of teens to work together for their traffic safety.



# 7. Define Financial Fitness?

- Financial Fitness is a National peer education program involving youth to teach one another how to make, save & spend money wisely.
  - **Banking Basics** - Conquer bank accounts, credit & investments
  - **Cash Control** – Track & plan personal spending
  - **Making Money** - Sharpen on-the-job financial fitness
  - **Consumer Clout** - Become a savvy spender
  - **Financing Your Future** - Apply financial skills to real life.



## 8. Describe the Power of One? List its five Units?

- **Power of One** helps students find & use their personal power to set their own goals, work to achieve them & enjoy the results.
  - **A Better You** — Improve your personal traits
  - **Family Ties** — Get along better with family members
  - **Working on Working** — Explore work options, prepare for a career, or sharpen skills useful in business
  - **Take the Lead** — Develop leadership qualities
  - **Speak Out for FCCLA** — Tell others about positive experiences in FCCLA.



## 9. Describe the FCCLA Community Service Program?

- The FCCLA Community Service program guides students to develop, plan, carry out & evaluate projects that improve the quality of life in their communities.
- Community Service helps young people build skills for family, career & community roles; provides youth-centered learning & encourages young people to develop positive character traits of trustworthiness, respect, responsibility, fairness, caring & citizenship.



# 10. Describe Dynamic Leadership & list the six Units of the Program?

- Dynamic Leadership helps young people build leadership skills, for a lifetime of strong leadership in families, careers & communities.
- The six Units of the Dynamic Leadership Program are:
  - Model good character
  - Solve problems
  - Foster positive relationships
  - Manage conflict
  - Build teams
  - Educate peers



# 11. Describe Student Body? List the three Student Body Units?

- Student Body is a National peer education program helping young people to establish healthy attitudes & habits to last a lifetime. The three unit areas include:
  - **Eat Right** — Explore good nutrition, eating disorders, healthy snacks, supplements, vegetarianism & more
  - **Be Fit** — Take action related to lifelong exercise habits, obesity, sports training & other topics
  - **Make Healthy Choices** — Choose a positive lifestyle by avoiding drugs, alcohol & tobacco; managing stress; building self esteem; & practicing good character.



## 12. Describe Career Connection?

- Career Connection is a National program which guides youth to link their options, look at career pathways & their skills to build success in their families, careers & communities by— discovering their strengths, targeting career goals & initiating a plan for achieving the lifestyle they desire.



# 13. What does STAR (in STAR Events) stand for?

- **Students Taking Action with Recognition**
  - Star Events are competitive events where members are recognized for achievement in chapter & individual projects, leadership skills, & career preparation. STAR Event participants learn through the following activities:
    - **cooperative** – a team works to accomplish specific goals
    - **individualized** – an individual member works alone to accomplish specific goals
    - **competitive** – individual or team performance is measured by an established set of criteria.



# 14. What does STOP (in STOP the Violence) stand for?

- **Students' Taking On Prevention (STOP) the Violence** empowers youth with attitudes, skills & resources in order to recognize, report & reduce youth violence. Whether it is fighting, making threats, or bullying, violence is a concern.
  - **FCCLA members use peer education to:**
    - Reach their peers with violence prevention education
    - Recognize warning signs of potential youth violence
    - Encourage young people to report troubling behavior
    - Collaborate with the school & community to address youth violence
    - Develop & implement an a project to reduce potential violence in their school.



15. What is the current Membership Campaign & name the three “R’s”?

- **The 2013-2014 Membership Campaign is:**



- **The three “R’s” to Membership is:**
  - Recruit
  - Retain
  - Recognize



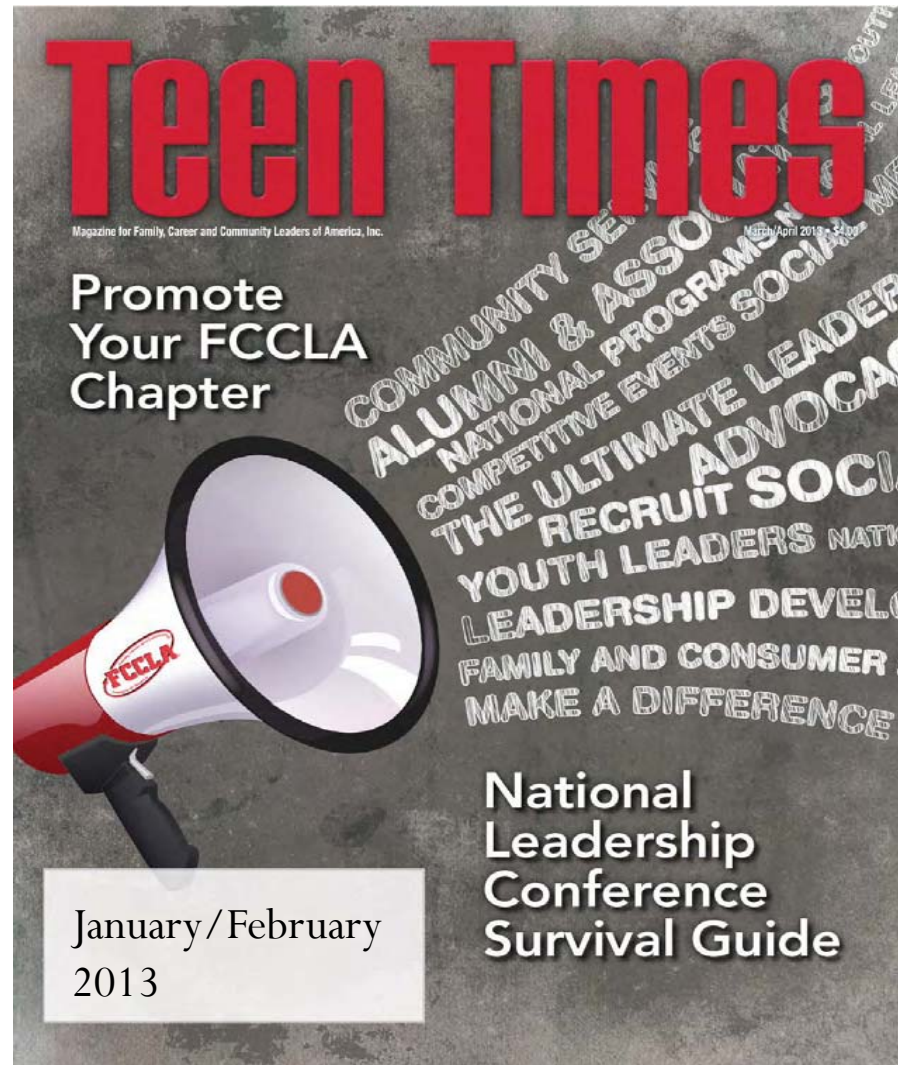
# 16. How many chapters & members have joined FCCLA Nationally?

- Over 6,500 Chapters & 200,000 members have joined FCCLA in the 50 United States, Puerto Rico & the Virgin Islands.
- The organization has involved more than 10 million people since its founding in 1945.



# 17. What is the official magazine for FCCLA?

- Teen Times



# 18. When is National FCCLA Week?

- February 9<sup>th</sup> - 13<sup>th</sup>, 2015



# 19. What about FCCLA at Bingham?

- Bingham FCCLA is open to any students.
- We always holds an opening social recruitment party the first part of September. **Watch for the Signs!!!**
- Membership dues are \$20 for the year, which pays your National, State & Chapter dues.
- We do field trips, fun activities, community service projects, Star Events & much more!!!

**Come Join the FUN!!!**

